



## PROJECT REFERENCE SHEET

### PROJECT DETAILS

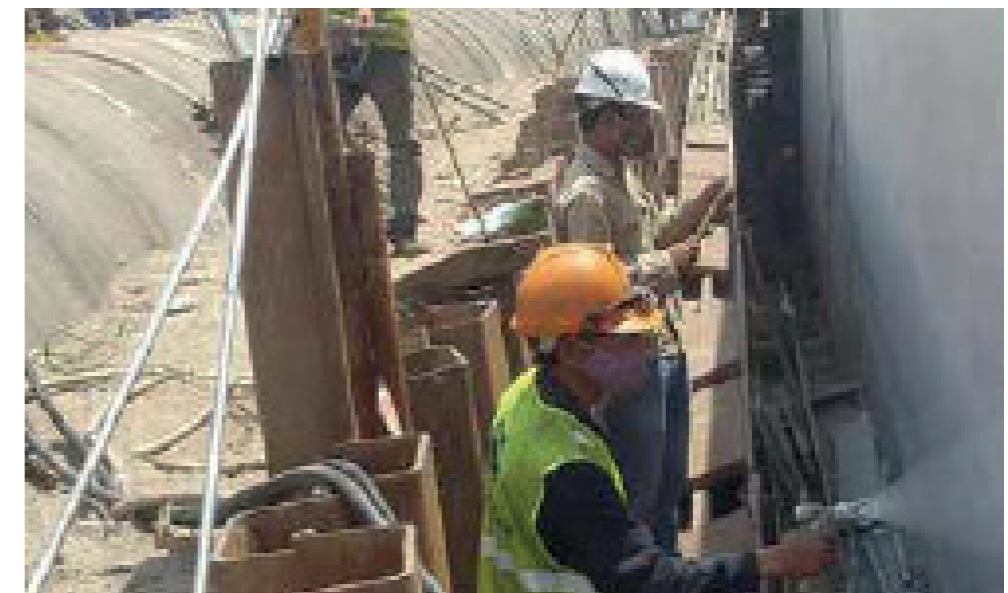
PROJECT: TRUNG HOA - CUT + COVER TUNNELS  
LOCATION: HANOI, VIETNAM  
REALIZATION: 2015  
AREA: 14,500M<sup>2</sup>



**PROJECT:  
TRUNG HOA - CUT +  
COVER TUNNELS**



**MATACRYL® WPM  
APPLIED**



#### UK & Ireland Address

Kingston House, 3 Walton Road, Pattinson North, Washington, Tyne & Wear, UK  
T: +44(0)191 416 8360 E: info@uslspecialityproducts.com  
W: www.matacryl.com / www.uslspecialityproducts.com



#### UK & Ireland Address

Kingston House, 3 Walton Road, Pattinson North, Washington, Tyne & Wear, UK  
T: +44(0)191 416 8360 E: info@uslspecialityproducts.com  
W: www.matacryl.com / www.uslspecialityproducts.com