



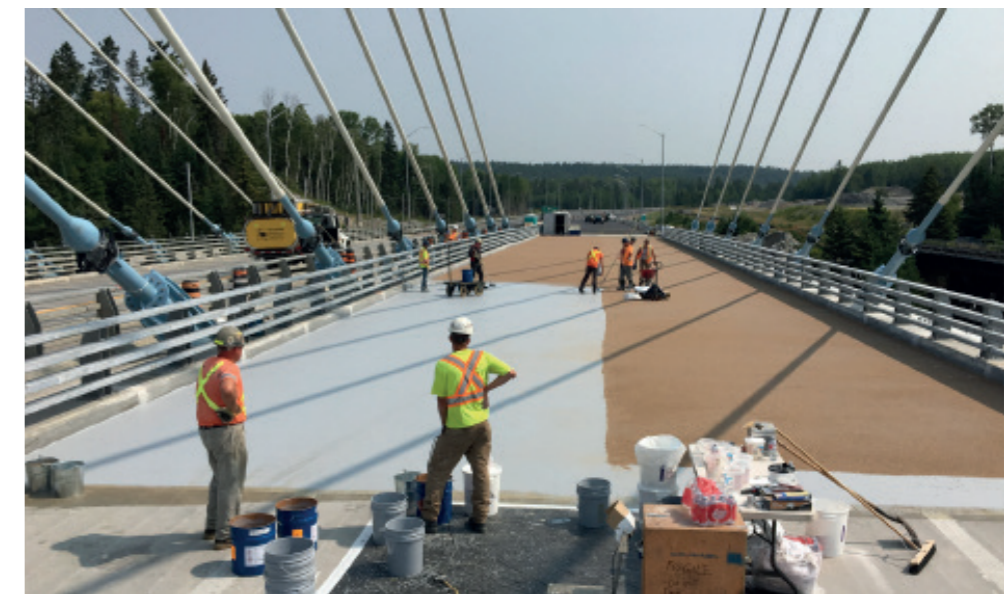
PROJECT REFERENCE SHEET

PROJECT DETAILS

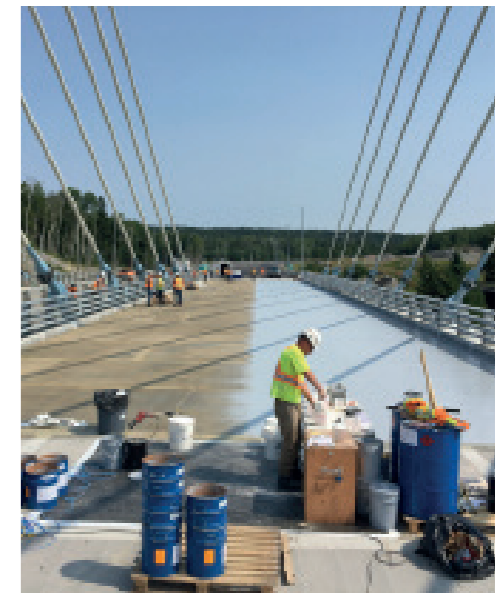
PROJECT: NIPIGON BRIDGE
LOCATION: 403 ON-11, NIPIGON, ON,
CANADA
REALIZATION: 2018
AREA: 4,125M²



PROJECT: NIPIGON BRIDGE



MATACRYL[®] WS APPLIED



UK & Ireland Address

Kingston House, 3 Walton Road, Pattinson North, Washington, Tyne & Wear, UK
T: +44(0)191 416 8360 E: info@uslspecialityproducts.com
W: www.matacryl.com / www.uslspecialityproducts.com



UK & Ireland Address

Kingston House, 3 Walton Road, Pattinson North, Washington, Tyne & Wear, UK
T: +44(0)191 416 8360 E: info@uslspecialityproducts.com
W: www.matacryl.com / www.uslspecialityproducts.com